

# No Sound Series

# 170

## NS

Certified for:

 Usage cycles  
200.000 cycles

Protects from:

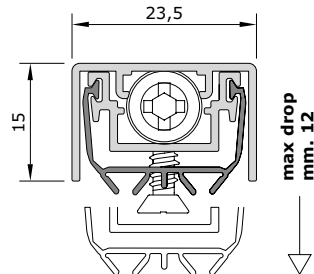
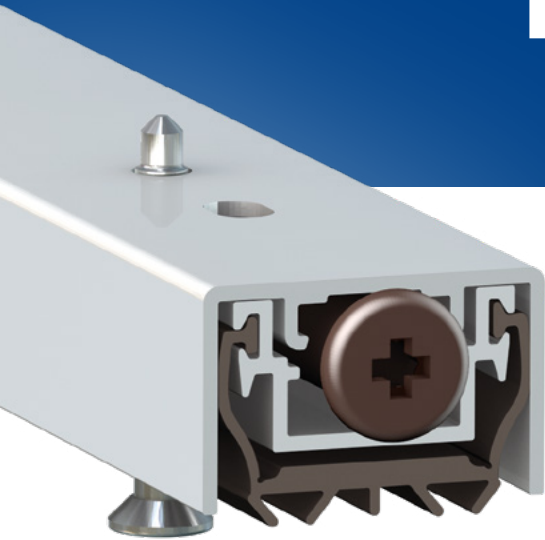
 Air

 Water

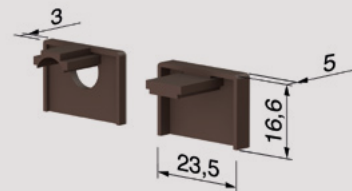
 Light

 Insects

 Not an obstacle for disabled persons

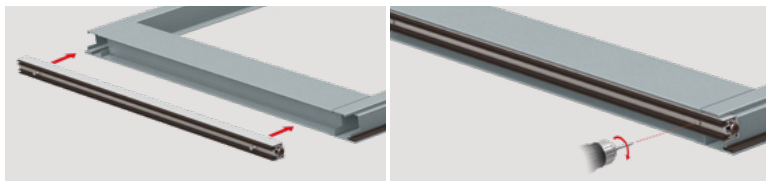


### STANDARD ACCESSORIES





Standard measurements (mm)	330	430	530	630	730	830	930	1030	1130	1230	1330
Max shortening (mm)	20	100	100	100	100	100	100	100	100	100	100

### FASTENING SYSTEMS

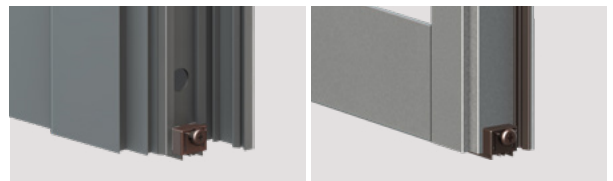


With pre-mounted screws

 Mechanism with a single adjustment (screw F: descent) characterised by the controlled movement of the moving profile with gasket (immediate descent from the hinge side of the door and consequent gradual descent for the entire length) for adjustment to the floor.

 **STANDARD:** Cardboard box with 25 pcs + 25 standard accessory packs.

### MAIN APPLICATIONS



Aluminium door

Steel door





Extruded profiles in aluminium alloy 6060 - high performance wrap-around silicone gasket - elements printed in self-lubricating nylon + nylon reinforced with 30% glass fibre - threaded rods in burnished iron - Ø 5 mm brass bushing - coil springs in treated stainless steel - self-drilling 3,5 x 22 mm screws.

### OPTIONAL ACCESSORIES

Details on page 102



#### 1 Nylon plate

CA201 CA202 CA203 CA204  
CA205 CA207

 100 pcs pack  
 brown, white

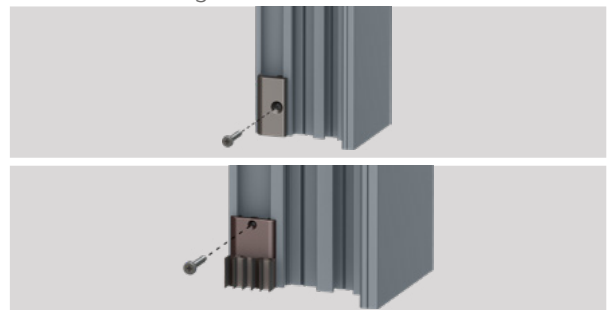
#### 2 Insulating nylon plate with silicon gasket

PI003 PI004 PI005


 20 pcs pack  
 brown, white

#### Application examples

Frame with ribbing



 **BUTTON (F):** hexagonal brass.

 **OPTIONAL:** Cardboard box with 15 polyethylene bags with 1 pc + 1 standard accessory pack + assembly instructions.