

# Special Series



# 270

Certified for:



Usage cycles **200.000**

Protects from:



Air



Water



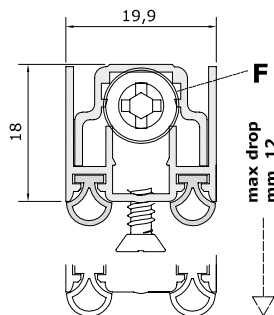
Light



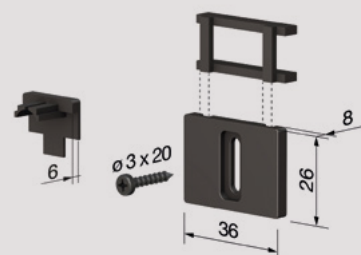
Insects



Not an obstacle for disabled persons

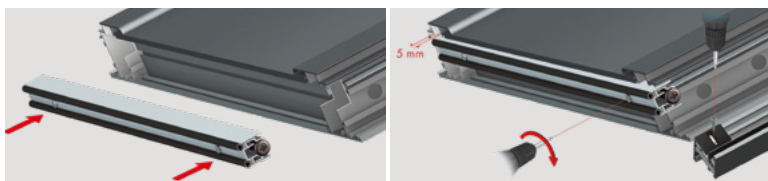


## STANDARD ACCESSORIES



Standard measurements (mm)	330	430	530	630	730	830	930	1030	1130	1230	1330
Max shortening (mm)	70	130	200	200	200	200	200	200	200	200	200

## FASTENING SYSTEMS



With pre-mounted screws

Mechanism with a single adjustment (screw F: descent) characterised by the controlled movement of the moving profile with gasket (immediate descent from the hinge side of the door and consequent gradual descent for the entire length) for adjustment to the floor.

**STANDARD:** Cardboard box with 30 pcs + 30 standard accessory packs.

## MAIN APPLICATIONS



Aluminium door



Extruded profiles in aluminium alloy 6060 - dual extruded tubular neoprene gasket - elements printed in self-lubricating nylon + nylon reinforced with 30% glass fibre - threaded rods in burnished iron - Ø 5 mm brass bushing - coil springs in treated stainless steel - self-drilling 3.5 x 22 mm screws.

## OPTIONAL ACCESSORIES

Details on page 102

### 1 Nylon plate

CA104			
CA201	CA202	CA203	CA204
CA205	CA207		

100 pcs pack

brown, white

### 2 Insulating nylon plate with silicon gasket

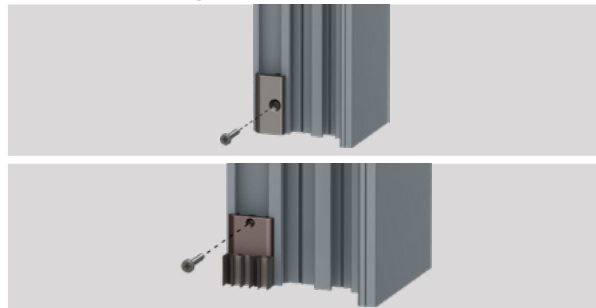
PI001	PI002	PI002-R
PI003	PI004	PI005

20 pcs pack

brown, white

## Application examples

Frame with ribbing



**BUTTON (F):** hexagonal brass, square nylon, bevelled nylon, rolling nylon (pivot).

**OPTIONAL:** Cardboard box with 15 polyethylene bags with 1 pc + 1 standard accessory pack + assembly instructions.